

- STRATEGIC POLICY**
- Cranbrook Plan Area (Strategy 12)
 - Employment Allocation (Strategy 16)
 - Green Wedge (Strategy 8)
 - Proposed Clyst Valley Regional Park (Strategy 10)

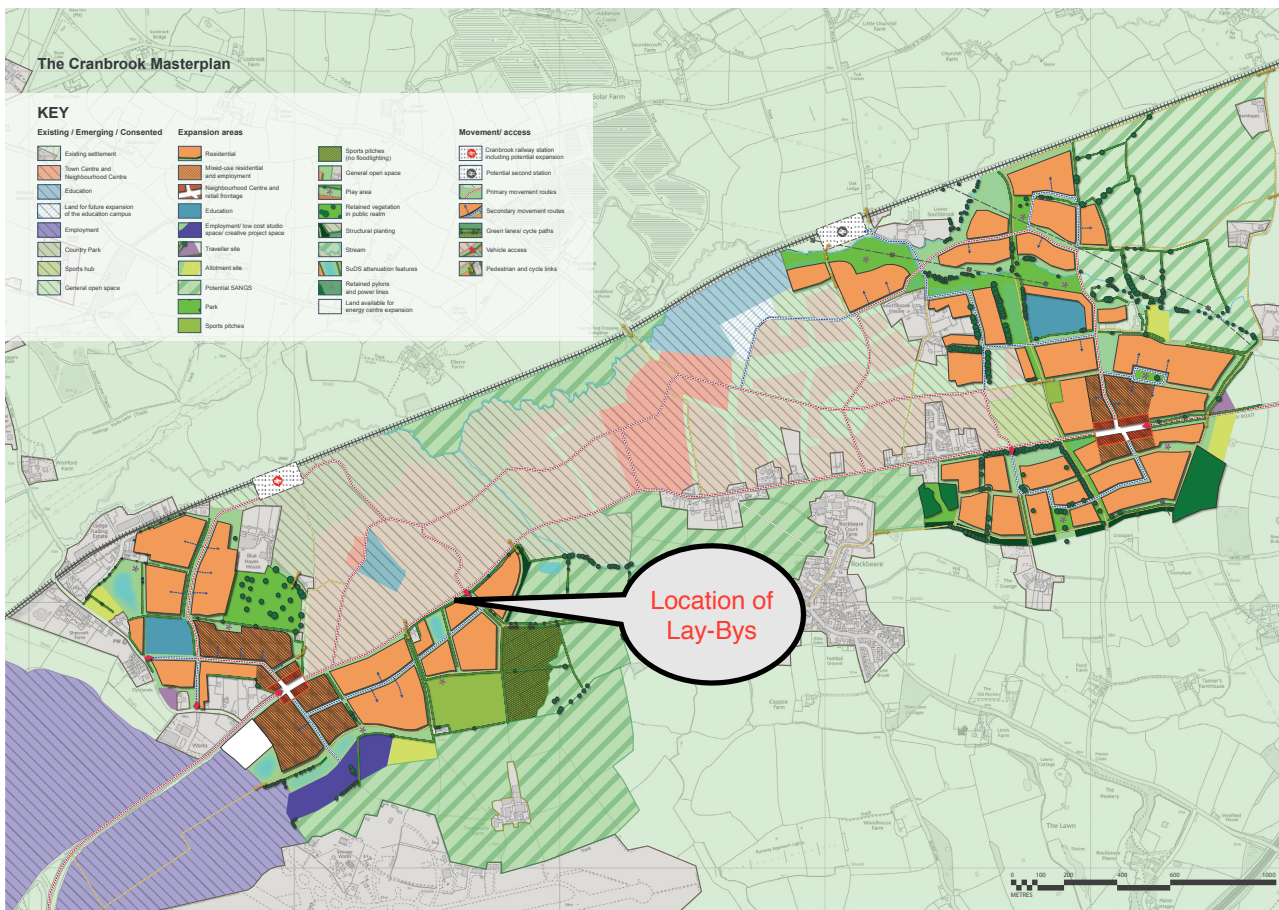
- WEST END DEVELOPMENTS**
- Cranbrook Phase 1 (Strategy 9, 12)
 - Cranbrook Expansion Areas (Strategy 9, 12)
 - Old Park Farm (Strategy 9, 14)
 - Pinnacourt Farm (Strategy 9, 14)
 - North of Blackhorse (Strategy 9, 13)
 - Mosshayne (Strategy 9, 13)
 - Skypark (Strategy 9)
 - Science Park (Strategy 9)
 - Intermodal Interchange (Strategy 9, 15)

- FOR INFORMATION (areas are not designated through Local Plan policy)**
- Proposed Tiltbarn Green Road
 - Boundary Existing and Proposed Employment Area
 - Conservation Area
 - Recreation Areas, Allotments, Accessible Open Space
 - Floodzone 2
 - Cranbrook Train Station
 - Cranbrook Country Park
 - County Wildlife Sites
 - Historic Park or Garden

- Combined Heat and Power Plant
- East Devon District Council Boundary
- Outside Plan Area



New East Devon Local Plan 2013 - 2031
January 2016
West End
Inset Map



The Cranbrook Masterplan

KEY

- | | | |
|---|--|--|
| <p>Existing / Emerging / Consented</p> <ul style="list-style-type: none"> Existing settlement Four Centres and Neighbourhood Centres Education Land for future expansion of the education campus Employment Country Park Sports hub Charter open space | <p>Expansion areas</p> <ul style="list-style-type: none"> Residential Mid-use residential and employment Neighbourhood Centre and local heritage Education Employment low cost studio / new creative project space Traveler site Allotment site Potential SANGS Park Sports pitches | <p>Movement/ access</p> <ul style="list-style-type: none"> Sports pitches (No floodlighting) General open space Play area Restored vegetation or public realm Structural planting Stream SUDS attenuation features Restored pylons and power lines Land available for energy route expansion Cranbrook valley station including potential expansion Potential second station Primary movement routes Secondary movement routes Green linear cycle paths Vehicle access PeDESTAL and cycle links |
|---|--|--|

Location of Lay-Bys

